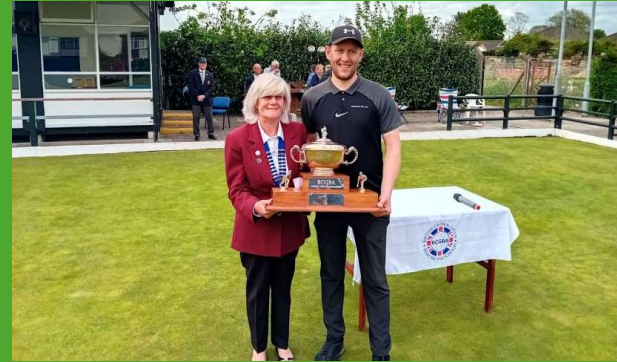




Ref: CTCR – 1.1 - 25

The British Crown Green Bowling Association

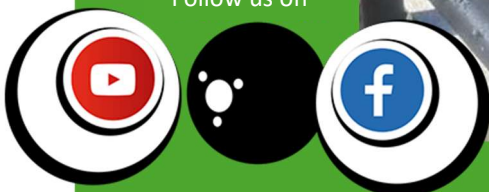
Founded in 1907



Club Team Championship Rules 2025



Follow us on



BCGBA Club Team Championship Rules

1. The Club Championship shall be held annually. The final venue shall have no less than two greens and will be decided by the BCGBA Competitions Committee.
2. Each of the 15 County Associations in membership shall nominate two Clubs to the Association National Administrator by the 1st January each year, the Isle of Man Crown Green Bowling Association will be invited to nominate one Club by the same date. Nominations should be Cup or League winners. If insufficient entries are received in our competitions, the BCGBA Competitions Committee can invite members to fill any remaining places.
3. Any county that fails to submit the required information by the due date will be excluded from competition. An appropriate fine will be imposed on any defaulting county.
4. Teams for this event will consist of 8 players and each Club shall submit to the Official in charge on the day of the event, a squad list, maximum of 16 players, from which all teams must be selected. Players named on the squad list must have been registered playing members for that Club during the qualifying season and in the current season.
5. There will be an entry fee for each team, this to be determined annually by the Competitions Committee.
6. Group Structure:
 - For the qualifying rounds, teams will be drawn into groups (A, B, C, D, etc), each comprising four teams (labelled 1, 2, 3, 4). The number of groups and teams may be adjusted based on the number of entries. Teams from the same county affiliate will not be drawn into the same group.
 - On match day, two groups will play at a two-green venue, or one group will play at a single-green venue.
 - Each group of four will compete in a round-robin format on one green, and the winner from each group will qualify for finals day.
 - In the event of a Group with Three Teams:
 - The first match will be played between the first two teams drawn.
 - The second match will feature the losing team from the first match against the non-playing team.
 - The final match will then be played between the winner of the first match and the non-playing team from the first round.
7. Player and Team Eligibility:
 - A player may not be selected to play for more than one team in the Championship.
 - No team or player may play on their own green.
8. Practice Restrictions:
 - Teams or players may not practice on a green where they are due to play for 14 days before the match.
9. Qualifier Match Rules:
 - Match Format:
 - All matches in the round-robin stages will be played to 21 up.

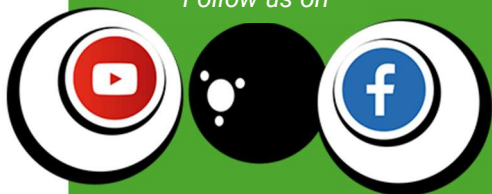
- Five games must be in progress at all times until the completion of each match:
 - Games 1, 2, and 3 from Match One and games 1 and 2 from Match Two will be played first.
 - Games 4 and 5 from Match One and games 3, 4, and 5 from Match Two will follow.
 - This format must be maintained until all matches are completed.
- **Order of Play:**
 - The order of play for each match will be determined by an exchange of scorecards numbered 1 to 8, with players called to the green in this order.
 - Players must report to the green manager or referee when called. If a player is absent when called, they will be replaced by a reserve and won't be eligible to play in that match.
 - The allocation of jacks to odd and even-numbered players will be decided by a coin toss after the draw is made.
- **Qualifier Match Outcome:**
 - The team with the highest total score in each match will be declared the winner and awarded 2 points. In the event of a draw, each team will receive 1 point.
 - After the completion of all round-robin matches, the team with the most points in each group will advance to finals day.
- **Tiebreaker Rules:**
 In the case of a tie in either the group stages or the finals, the following criteria will be applied, in order:
 - a. The team with the higher aggregate score will advance.
 - b. If still tied, the team with the most individual match winners will advance.
 - c. If still tied, the team with the best individual match winner will advance.
 - d. If still tied, the team with the next best individual match winner will advance, and so on.

10. Each participating Club shall provide a measurer. The British Crown Green Bowling Association shall provide referees. The appointment of Referees and Green Managers will be made in conjunction with the British Crown Green Referees Society (BCGRS).

11. Clubs may only compete in one County Club Championship.

12. BCGBA Dress Code will apply.

Follow us on



The British Crown Green Bowling Association

Shop1 @ 83 High Street, Kinver, Stourbridge

West Midlands DY7 6HD

www.bcgba.org.uk

