

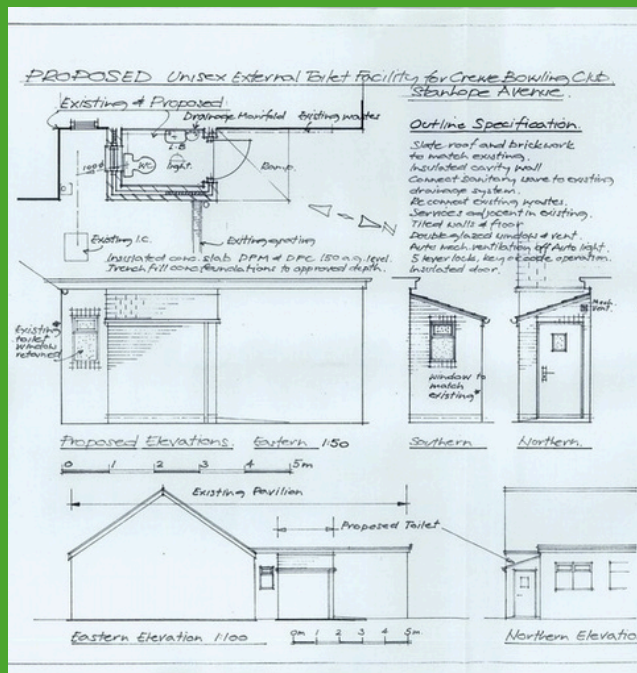
National Development Strategy

Case Study - Inclusion

'Accessible Toilets and Ramps' Project Crewe BC, Cheshire

Crewe Bowling Club recognised a need to improve access for both current and potential members, particularly those with disabilities. As a private club with indoor toilets and facilities, they aimed to create a more welcoming and inclusive environment for all.

The solution was to install an accessible toilet block outside and ramped access to both the toilets and main clubhouse – available even when the club is closed.



Architectural Plans (above)

Planning began before COVID-19, with early fundraising carried out by the club. The initial estimate for the toilet, but post-pandemic challenges and added features (like water heaters and hand dryers) doubled the final cost to £16,000. The ramp to the main clubhouse was another £5700.



Despite setbacks – including a builder abandoning the project – the club secured planning permission (Ref: 22/1510N) and found a reliable local contractor to complete the work. Final building inspection was signed off in March 2025.

The impact has been we now have fully accessible facilities, greater independence for disabled visitors as well as safe, modern amenities available beyond opening hours. The new features are already attracting more female and disabled bowlers, and enhancing the club's community appeal.



Completed Toilet Facility (above)



Completed Ramp Access (above)

What we learnt was we need to double-check builder credentials and experience. We should have confirm ramp dimensions early to avoid late design changes but I don't think we could have envisaged the price changes post-COVID.

National Development Strategy Want more details of this case study?

Contact: **Jayne McKay** - BCGBA National Development Officer - www.bcgba.org.uk/contact

Follow us on



The British Crown Green Bowling Association

Shop1 @ 83 High Street, Kinver, Stourbridge

West Midlands DY7 6HD

www.bcgba.org.uk

